

WOODSI DE



**Kath & Keith Potter
Woodside
Stanton Lees
MATLOCK
Derbyshire DE4 2LQ
Tel./Fax. 01629 734320**

[Email](#)



Two double rooms and a third room made up as either a twin or double bed; all with en-suite facilities.

**TV, Tea & Coffee making facilities in all rooms. Hairdryer in all rooms.
Full central heating. 'Off Street' parking.**

Spring water on tap. TV lounge. Telephone available. Ironing facilities.

Bothy with 'Solar Photo-Voltaic' tiles which supplies electricity to the property, with Table Tennis (coming soon) is available for visitors use.

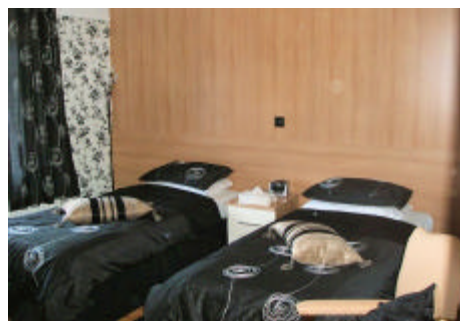
Full English breakfast. Special diets catered for.

No children accepted under 3 years. No dogs allowed in rooms. No smoking on premises

Please let us know if you have any special needs and we will do our utmost to help you, if we can.



Rear 'double' bedroom



**Rear 'twin' / 'super king-size'
Double bedroom**



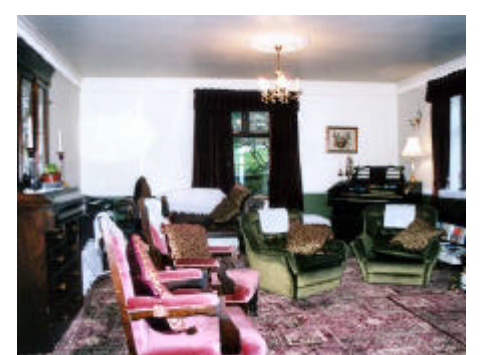
Front 'double' bedroom



Conservatory breakfast room



**Side garden with bothy
(behind tree)**



Lounge

Terms for accommodation with full English breakfast.

2010

Double room for one night (per person) : (NOT available during the high season.)	£30
Double room for 2 or more nights (per person) :	£28
Weekly rate per person per night:	£27
Single occupancy for 1 night: (NOT available during the high season.)	£40
Single occupancy for 2 or more nights:	£35

Full English breakfasts served and if required a vegetarian breakfast (a speciality) can be served. All preserves home made.

For **Lunch** or **Dinner** there are many tempting, fine eating places within the vicinity.

When visiting the Peak District or Derbyshire Dales you can be sure of a friendly welcome at **Woodside**, which enjoys a picturesque rural setting in the isolated hamlet of Stanton Lees, overlooking the Derwent Valley.

Surrounded by ancient moors and woodlands teeming with wildlife, **Woodside**, situated on the Southern Plateau of the Peak District National Park, offers panoramic views over the Derwent Valley below to the moors above Chatsworth.



The Peak Railway is 2 miles away; Bakewell and Matlock are 4.5 miles away and nearby are Haddon Hall and Chatsworth House.

Numerous countryside birds including Nuthatches, Woodpeckers and Goldcrests frequent the landscaped garden alongside the many Pheasants that feel at home on the patio.

Black Norwegian Fallow Deer are often seen in the area.

Walks are available direct from **Woodside**.

Maps & guides are available and Kath will advise on suitable routes.

DIRECTIONS

Map ref. SK 254633

From **Ashbourne**:

Take the A 515 towards Buxton, then right onto B 5056 for 11 m. and turn right at the sign for Birchover. Drive to the top of the village and turn right at the fork signposted to Stanton Lees. Left opposite the Chapel to the junction. Turn left, **Woodside** is the 2nd house on the right.

From **Bakewell**:

Take A6 to Rowsley, turn right opposite the Peacock Hotel. Over the bridge, immediately turn right and up to the crossroads. Turn left to Stanton Lees.

Woodside is the 1st house on the left, on the **ROADSIDE**, after the '30 mph' and 'Stanton Lees' signs.

From **Matlock**:

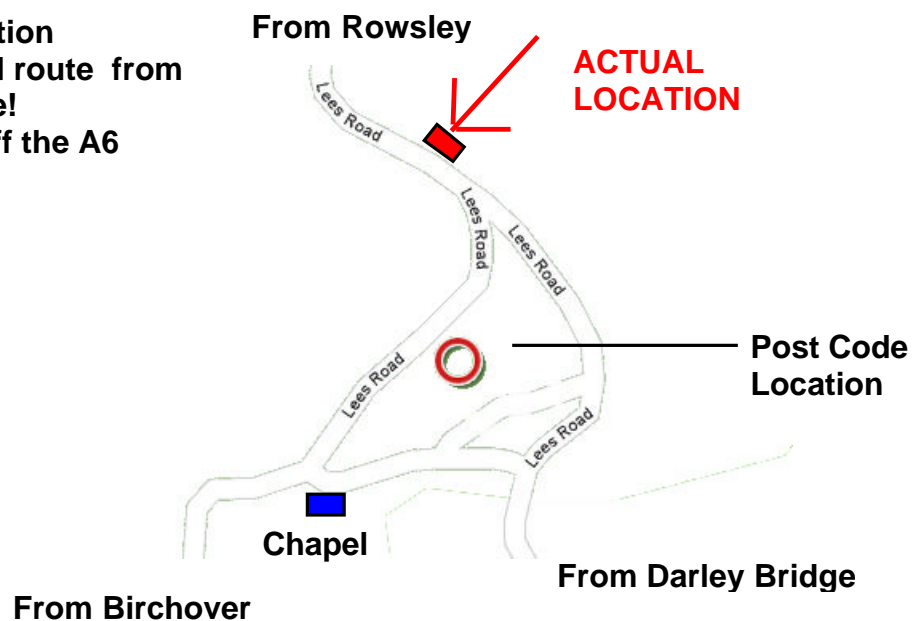
Take the A6 towards Bakewell for 2 miles. First left at the Red House Hotel to the cross roads, left onto B5057 into Darley Bridge.

Opposite the Three Stags Heads pub turn right to Stanton Lees. In the village take the right fork for 200 yards.

Woodside is the 5th house on the right.

SatNav users: DE4 2LQ covers all the local area! See map:

Note. From Bakewell direction **IGNORE** the recommended route from the A6 as this is unsuitable!
Go to Rowsley then turn off the A6
See above instructions.



Website: www.woodsdestantonlees.co.uk